

# TTE LAN

## Installation Instruction

**ATTENTION:**  
Carefully read through this manual prior to installing the device!  
This manual is subject to change without notice!

18020901, Rev. B, 07/2020

### Teletek Electronics JSC

Address: 14A Srebarna Str.,  
1407 Sofia, Bulgaria  
Tel: +359 2 9694 700  
<http://www.teletek-electronics.com>



EN

### General Information

TTE LAN is an universal communication module, designed also for operation via serial communication with control panels Eclipse series and Simpo fire alarm panel. The module transmits the incoming events to AJAX SP Pro server/Observer through LAN network. The general application of the module is to send messages for events to monitoring center or end-user. The module can be mounted into the panel's box or into small plastic box (SB-U) suitable for wall mounting.

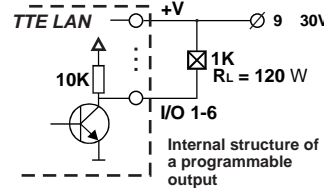
It is possible to program and to control the TTE LAN module remotely via AJAX SP Pro software application. The module is suitable for realizing of home automation applications.

### Programming

The TTE LAN module can be programmed by means of ProsTE - special programming software. For more information please refer to the distributor of this equipment or visit <http://www.teletek-electronics.com>

### Technical Specifications

- **Main power supply:** 9-30V=== (no tolerance), reversed polarity protection;
- **Current consumption:**
  - Normal operation mode (standby): 80mA
  - Maximal consumption: 150mA
- **6 Programmable Inputs/Outputs:** OC type (Open Collector)
- **Micro USB input** for direct PC connection;
- **Operating temperature:** 0°C ÷ +60°C;
- **Jumper for restoring** of the default factory settings;
- **Dimensions:** 50x90mm;
- **Parameters of the inputs:**
  - Permissible input voltage: 0 - 20V
  - Signal filtering period: 300ms
  - Threshold of operation: 1.3V
  - Hysteresis: ±0.4V



BG

TTE LAN

Eclipse

Simpo.

AJAX SP Pro/Observer

LAN

TTE LAN

(SB-U)

TTE LAN

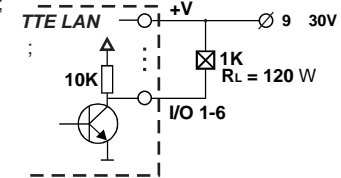
AJAX SP Pro.

TTE LAN

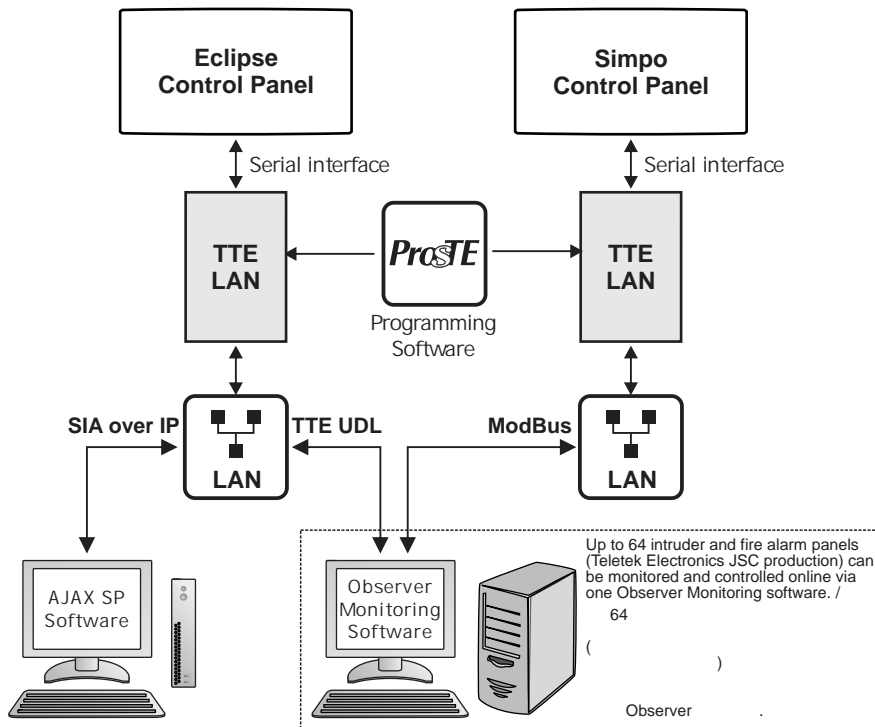
ProsTE.

<http://www.teletek-electronics.bg>

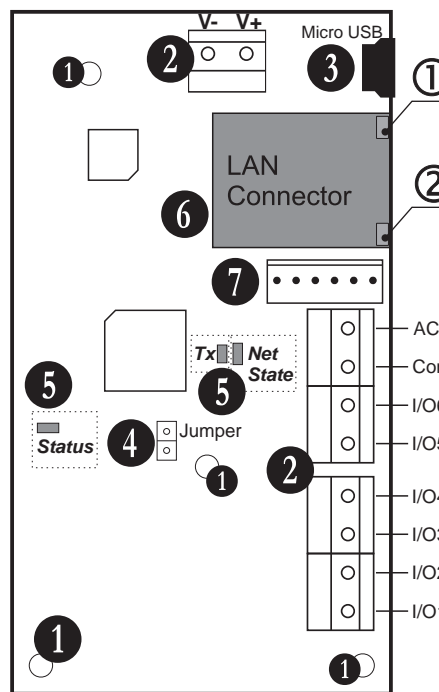
- : 9-30V=== ( ),
- : 80 mA
- : 150mA
- / : OC ( );
- **USB** : 0°C ÷ +60°C;
- : 50x90mm;
- : 0 - 20V
- : 300ms
- : 1.3V
- : ±0.4V



## Functional Diagrams /



## Elements Description /



- B - Mounting holes/
- C - Terminal row/ : 9-30V=== /
- ± V - Main power supply 9-30V=== /
- I/O1-6 - Programmable input/output (via ProsTE)/ ( ProsTE);
- Com - Common Ground/ ;
- AC\* - Terminal for AC monitoring of Eclipse panels/ Eclipse
- D - Micro USB Interface/ M USB ;
- E - Jumper to restore of the factory settings\*\*/ \*\*
- F - LED Indication\*\*\*/ (LED) \*\*\*:
- Status - LED for status of the connection with the panel/ ;
- Tx - LED for transmitting of event indication/ ;
- Net State - LED for the state of the connection with AJAX Pro and Observer/ AJAX Pro Observer.
- G - LAN network connector/ LAN : ( ).
- LED LAN Action (green)/ ( ).
- LED LAN Link (yellow)/ ( ).
- H - Serial interface for connection to Eclipse and Simpo panels/ Eclipse Simpo.

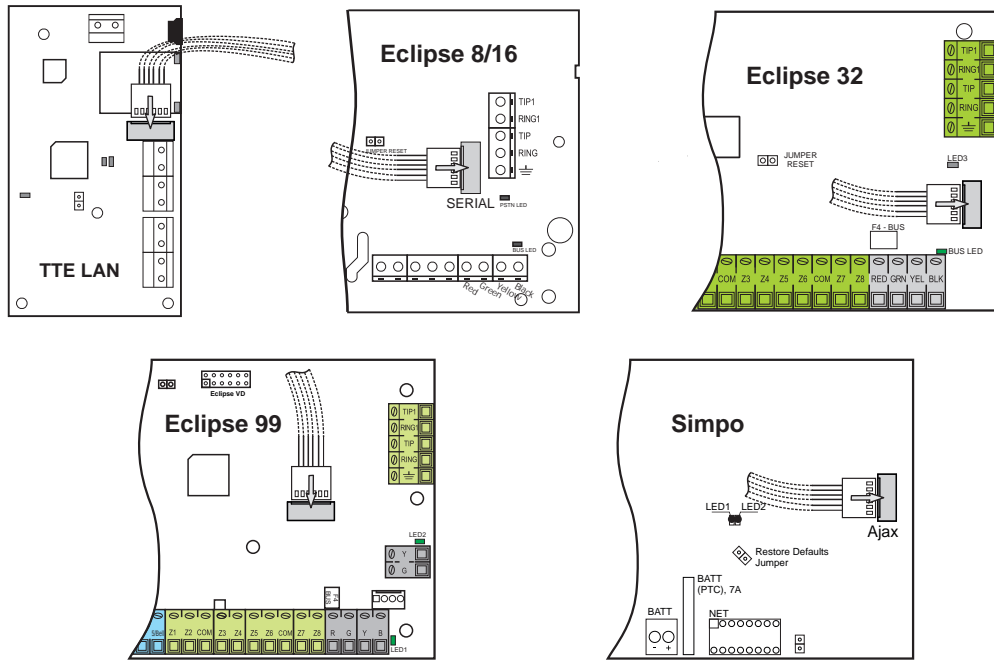
\* For using with Eclipse panels only. When the module is used as stand-alone device or it is connected to a fire alarm panel, this terminal is not used./ Eclipse.

\*\* Put a jumper to reset the module parameters by default./

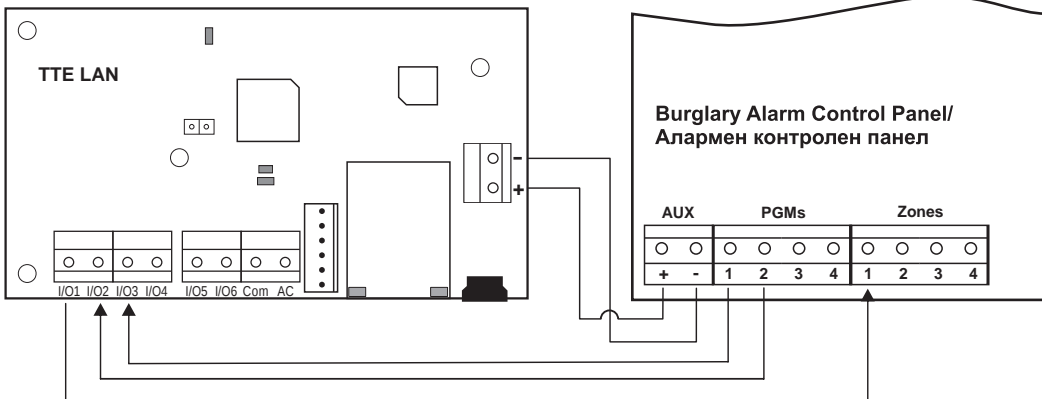
\*\*\* The detailed description of the LED indication is shown on page 2/ 2.

## 2 Connection diagrams /

The serial connection between the TTE LAN module and control panels ECLIPSE and Simpo is done with a flexible flat cable included in the spare parts kit - 300mm long. Connect the cable to the 6-pin interface terminal on the control panel PCB - Eclipse (Serial), Simpo (Ajax). The module is powered on from the control panel.



The programmable input/output terminals of the module are used for connection to third party control panels. The module can be powered on from the +/-AUX output (9-30VDC) of the control panel to +V and -V terminals observing the polarity. In the presented connection example the I/O1 terminal of the module is programmed as an output, and I/O2 and I/O3 are programmed as inputs via ProSTE software.



## 3 LED Indication /

LED	Indication		Description
Status (green/red)	Blinking	Red	No connection with the panel (Eclipse, Simpo).
		Green	Successful connection with the panel (Eclipse, Simpo).
	Lights OFF		Stand-alone operation mode, or connection to third party panel.
Tx (yellow)	Short blinks		Transmitting of an event to Ajax Pro server/Observer*.
Net State (green/red)	Lights ON	Red	No connection between TTE LAN and Ajax Pro/Observer* (Eclipse). ModBUS mode - no connection between TTE LAN and Observer* (Simpo)
		Green	Successful connection between TTE LAN and Ajax Pro/Observer* (Eclipse). ModBUS mode - successful connection between TTE LAN and Observer* (Simpo).
RJ-45 (LAN connector indication)	Green		LED LAN Action. The LED is blinking when there is activity on the link; otherwise, the LED is off.
		Yellow	LED LAN Link. The LED is on when there is a link connection; otherwise, the LED is off.
Status ( / )			(Eclipse, Simpo).
			(Eclipse, Simpo).
Tx ( )			Ajax Pro/Observer*.
	Net State ( / )	ModBUS -	TTE LAN Ajax Pro/Observer (Eclipse). TTE LAN Observer* (Simpo)
ModBUS -		TTE LAN Ajax Pro/Observer* (Eclipse). TTE LAN Observer* (Simpo).	
RJ-45 ( LAN )			Ajax Pro/Observer*. ( Tx ).
			LAN Action. LAN
			LAN Link.

\* Monitoring software for fire alarm and intruder control panels/

## 4 Initial power-up /

1. Set the parameters of LAN module using ProSTE programming software.
2. Turn off the power supply (main and back-up) of the control panel.
3. Connect the module to the panel: use the serial flat interface cable to connect to Eclipse and Simpo panels; or use the I/O terminals of the module to connect to the third party control panel - see the connection diagram.
4. Turn on the power supply (main and back-up) of the control panel.
5. Wait until the TTE LAN module enters into normal operation mode - the Status LED is blinking green\* and the Net State LED lights on in green. The time for initial power-up is up to 90 sec.

\* Note: When the module is used as stand alone device or it is connected to third party control panels, the Status LED is off.

