

DISCREET DETECTION

VESDA®

VESDA discreetly protects
irreplaceable architecture and
works of art from the threat of fire





OVERVIEW

Buildings that house irreplaceable architecture, works of art, archives, libraries, furniture and many other items owned by nations or private individuals can be historic or cultural in nature.

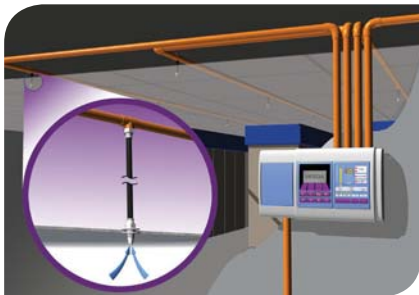
Because conventional detection has proven to be difficult to install discreetly, smoke detection has generally been reliant on the actions of the occupants with suppression by the fire brigade, often times resulting in fires causing loss or damage of irreplaceable artifacts due to fire, smoke or water.

A UNIQUE CHALLENGE

Due to the aesthetic design of some buildings, such as ornate ceilings or ceiling art-work, a discreet, unobtrusive smoke detection system is often desirable. Large, open atria or voids feature stratified, thermal layers that can prevent cooled smoke from reaching ceiling level. As such, conventional systems will normally only respond when a fully-fledged fire condition is reached, by which time significant damage has already occurred.

HOW DOES ASPIRATING SMOKE DETECTION WORK?

Air is continuously drawn from an area, via a pipe network, to a central detector that is continuously sampling for small traces of smoke.



WHY ASPIRATING SMOKE DETECTION AND VESDA?

VESDA provides the discreet detection required in heritage buildings by routing the sampling pipes in areas that are not visible from normal occupancy.

Small-bore capillary pipes are used to provide detection at the required location. The room fabric often dictates the location of these capillary tubes. Hiding the capillary tubes behind light fittings, blending in with ceiling paintings or forming part of the ceiling sculptures can all be used to provide 'invisible' smoke detection.

In high volume, atria applications such as cathedrals, capillary sample points can be routed into the area at intermediate vertical levels to good effect to overcome stratification. The higher potential sensitivity of the VESDA system means that less smoke is required at the sample points to provide an alarm condition.



EXAMPLE WHERE VESDA DISCRETE SAMPLE POINTS CAN BE APPLIED?

- Churches
- Stately Homes
- Museums / Galleries
- Libraries
- Archives
- Concert Halls
- Hospitals
- Universities
- Prisons
- Airports
- Transportation hubs
- Office Buildings

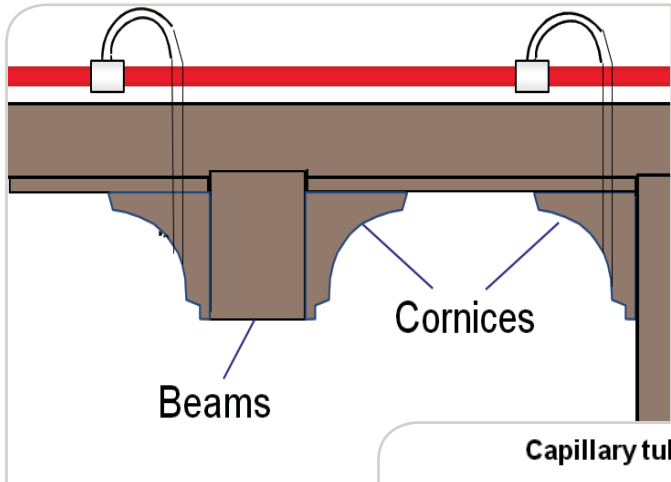
VESDA OFFERS DISCRETE DETECTION

VESDA offers an array of off the shelf sample points for discreet solutions and offer the flexibility to customize for unique project requirements.

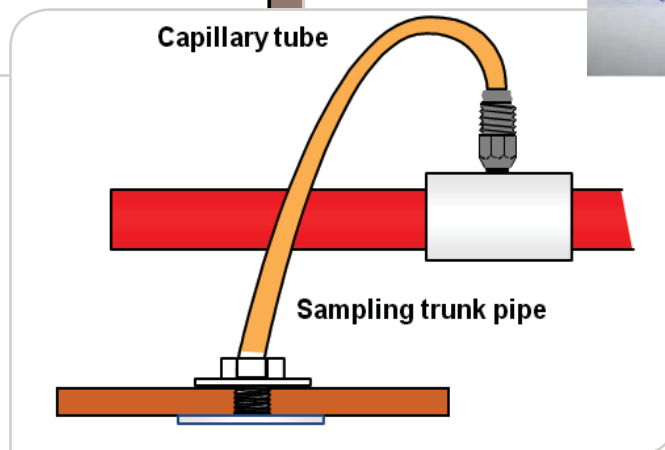
- Interiors where the appearance must not be spoiled by unsightly conventional detectors
- Artistic and cultural integrity – preserve aesthetic features
- One point for servicing:
 - VESDA allows sampling pipes to be placed where smoke will travel
 - VESDA allows detectors to be placed in discrete and easily accessible places
 - Easy installation
 - Simple servicing
 - Single VESDA can replace up to 40 unsightly conventional point detectors



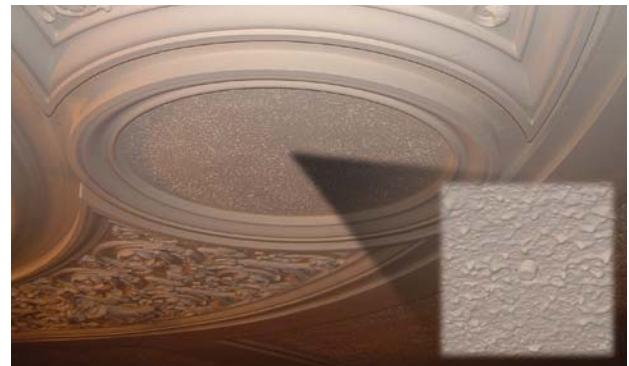
HOW IT WORKS



Capillary tubes run above the ceiling and enter the fire zone through a small hole in the cornice



VESDA DISCRETE DETECTION IN ACTION





RANGE OF SAMPLING POINTS TO CUSTOMIZE UNIQUE NEEDS OF APPLICATIONS

Product	Part No.	Region	Description
	059-001		Flush Sampling Point Kit (c/w 2 m of 10 mm OD tube, trunk adaptor, point and decal)
	059-007		Conical Sampling Point Kit (c/w 2 m of 10 mm OD tube, trunk adaptor, point and decal)
	144-013	EU	Conical Sample Point Head only (for 10 mm OD tube)
	E700-SP	US	Miniature Sampling Point
	PIP-015		Flush Sample Point Head only (for 10 mm OD tube)
	PIP-018		25 mm red ABS Air Sampling Test Point
	PIP-027		Air Sampling Test Point with Cap
	VSP-860	EU	Refrigerated Storage Sampling Kit (c/w upper and lower VSP-860 fixing flange)
	VSP-860-US	US	Refrigerated Storage Sampling Kit
	VSP-877		Flush Mount Sampling Point
	VSP-610		Tamper Proof Sampling Point Metric measurements
	VSP-610-US	US	Tamper Proof Sampling Point, 1" / 25 mm rigid of flexible conduit. Imperial measurements
	VSP-620-01		Tamper Proof Sampling Point, 6 mm capillary
	VSP-620-02		Tamper Proof Sampling Point, 8 mm capillary
	02-3000-06		Stainless Steel Sampling Point (6 mm)
	02-3000-08		Stainless Steel Sampling Point (8 mm)

Product	Part No.	Region	Description
	E700-SRB-SH		Mounting Base for sprinkler sampling point. Sprinkler head to be bought separately from Tyco
	222-059		Discreet end cap for 10 mm OD tube (Clear)
	VSP-980-W	US	VESDA-E VEA 6 mm Standard Sampling Point
	VSP-980-B	US	VESDA-E VEA 6 mm Black Sampling Point
	VSP-982-W	US	VESDA-E VEA 6 mm Surface Mount Sampling Point
	VSP-982-B	US	VESDA-E VEA 6 mm Surface Mount Black Sampling Point