



## **How to use DS-K1T804A Fingerprint Terminal connect to card reader by Wiegand**


## Preparation

Type	Model	Version
Software	IVMS-4200	V3.10.0.6
Fingerprint terminal	DS-K1T804A	V1.4.0 build 230613
Card reader	DS-K1108MK	

## How to use DS-K1T804A Fingerprint Terminal connect to card reader by Wiegand

Introduction: This article will introduce how to use DS-K1T804A Fingerprint Terminal connect to card reader by Wiegand.


DS-K1T804AMF



### K1T804A Pro Series Fingerprint Terminal

- Integrated management of access control and the time and attendance functions
- 3,000 fingerprints, 3,000 cards and 100,000 events storage
- Built-in card reader for Mifare1 card
- Communication via TCP/IP and Wi-Fi
- RS-485, wiegand interface
- Alarm input and output interface
- ISUP5.0, ISAPI

Add to Favorites



EOL

### Pro 1108 Series Card Reader

- Mifare1/ EM card reader
- Built-in audible beeper
- Support RS-485, Wiegand (W26, W34), and OSDP protocol
- IP65

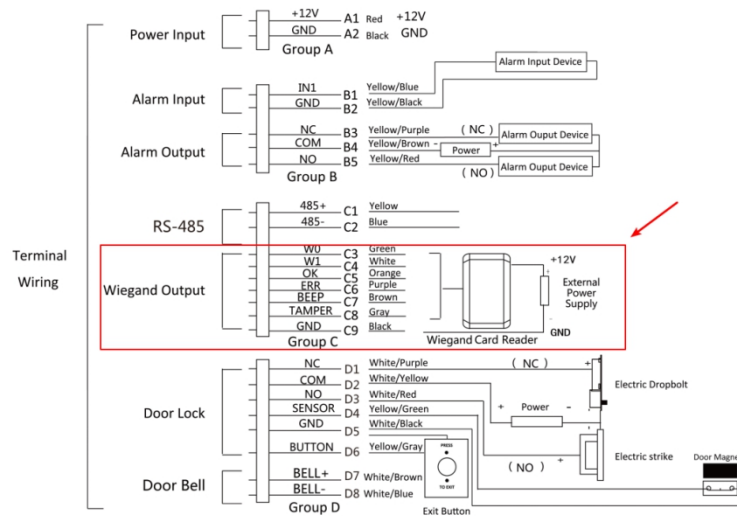
Add to Favorites

### 1. Wiring

- 1) **Fingerprint terminal and card reader wiring:** Use the wiegand interface to connect these two device. Follow the indication in the figure below.
- 2) **Power supply:** Supply power to the fingerprint terminal and the card reader respectively.

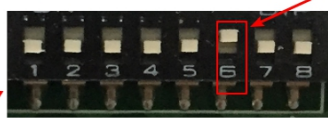
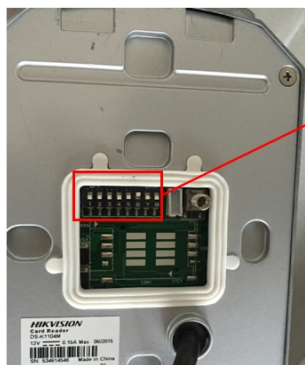
## How to use DS-K1T804A Fingerprint Terminal connect to card reader by Wiegand

- 3) **Network:** Connect the fingerprint terminal, card reader, as well as the computer for configuration to switch.



Note: must connect GND/W0/W1.

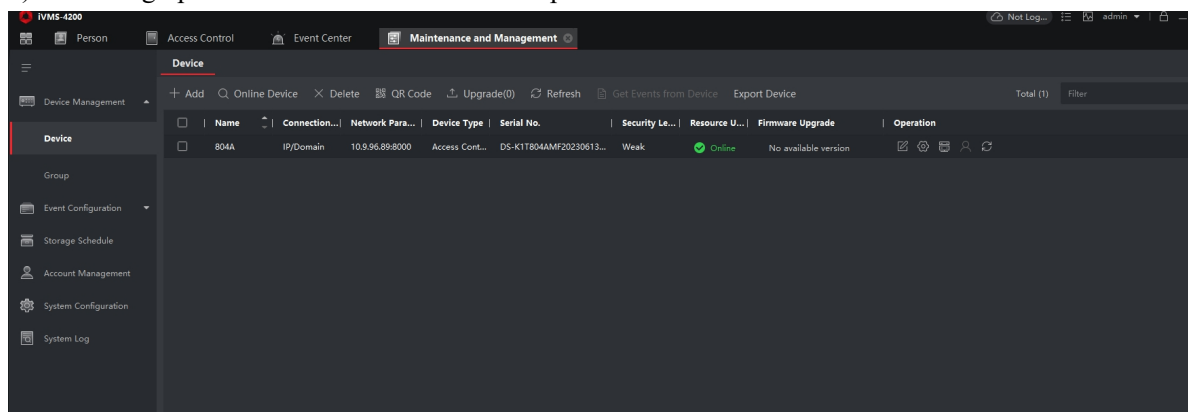
- 4) **Dip Switch:** set the dip switch of card reader to 0000 0100 that mean enable wiegand protocol.



NO.	Description	DIP Switch status
1~4	Address of RS-485	1: 1 0: 0
5	Read card No. or file in card. (Only available for CPU card reader.)	1: read card No; 0: read file in card.
6	Wiegand protocol or RS-485 protocol.	1: Wiegand protocol; 0: RS-485 protocol.
7	Wiegand Protocol (available when No. 6 is 1)	1: Wiegand protocol of 26-bit; 0: Wiegand protocol of 34-bit.
8	Reserved	

## 2. Configuration

- 1) Add fingerprint terminal to the IVMS-4200 platform. Make sure the device network status is online.



- 2) Please check the firmware , if not a latest version please upgrade the firmware of fingerprint terminal.

## How to use DS-K1T804A Fingerprint Terminal connect to card reader by Wiegand

The screenshot shows the 'Settings' menu on the left with 'Device Information' selected. The main area displays the following information:

Field	Value
Device Name	T&A Access Controller
Device Type	DS-K1T804AMF
Serial No.	P20152384
Firmware Version	V1.4.0 build 230613
Web Version	v4.46.1 build 201116
Case Number	1
Lock Number	1
Local RS-485 Number	1
Extension Module Version	V1.3.1 build 20200628
External Card Reader Ve...	V1.0.0 build 310309

A red 'Save' button is located at the bottom right of the form.

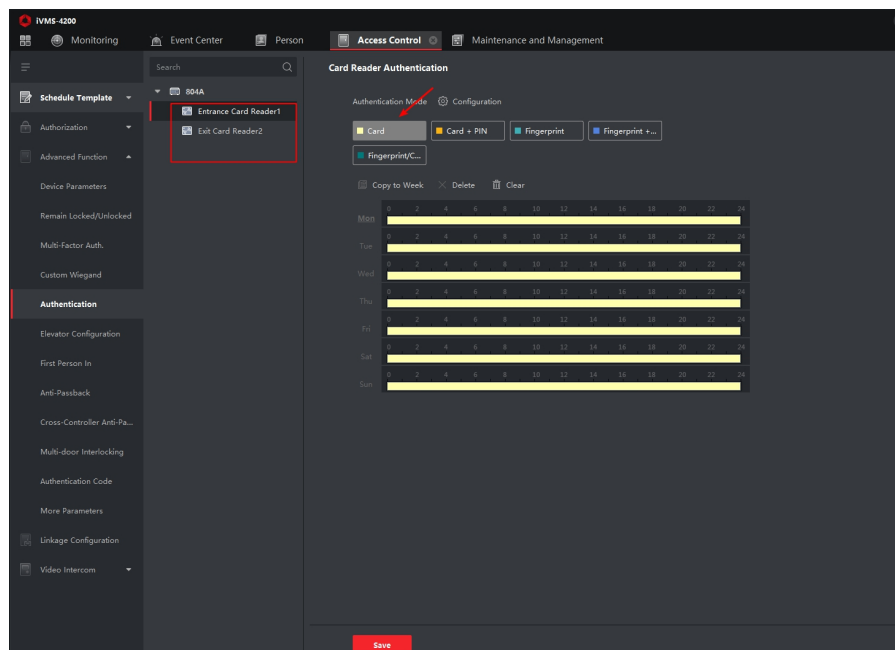
- 3) Check the 804A wiegand communicaiton direction and authentication mode.

The screenshot shows the 'IVMS-4200' interface with the 'Access Control' tab selected. The 'Wiegand' sub-tab is active, showing the following configuration:

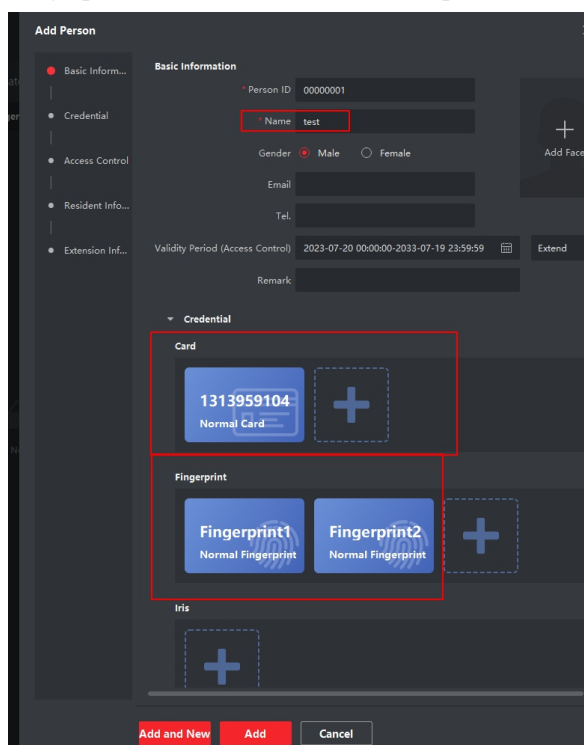
Field	Value
Wiegand No.	1
Communication Direction	Accepted

A red 'Save' button is located at the bottom right of the configuration area.

## How to use DS-K1T804A Fingerprint Terminal connect to card reader by Wiegand

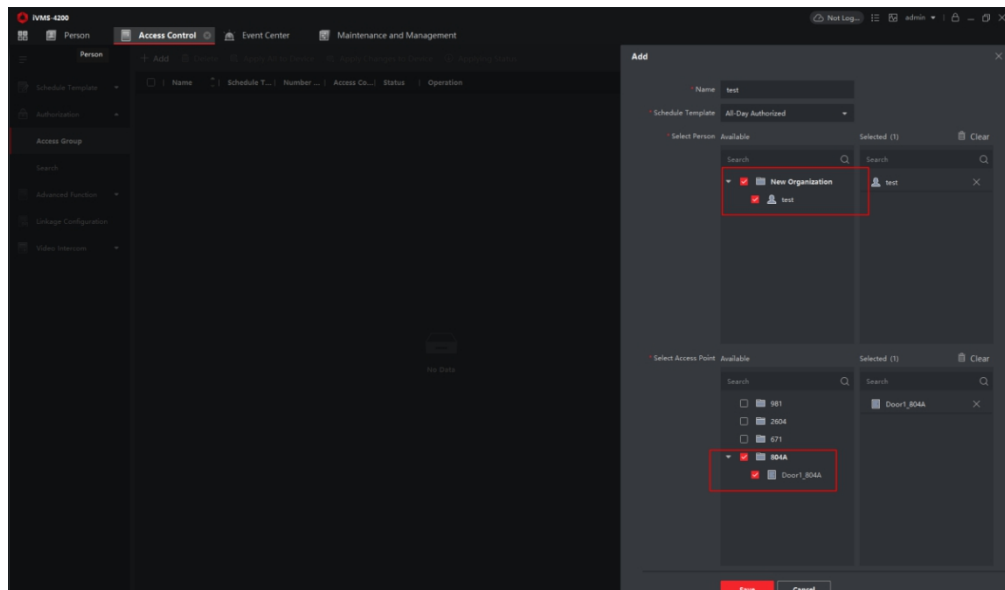


- 4) Create a person ,enroll a fingerprint and a card number for test person.

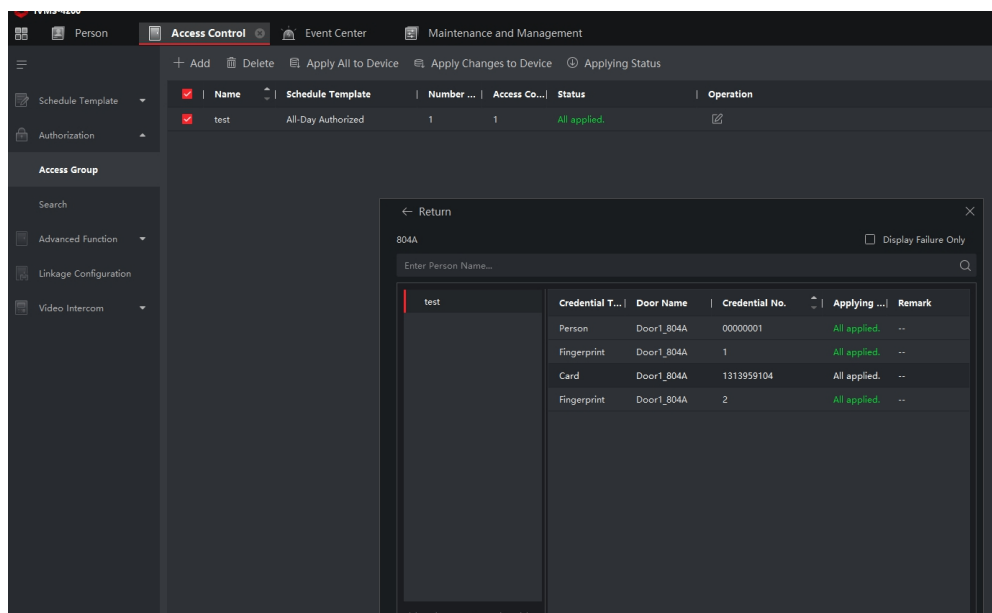


- 5) Apply the test person to 804A device.

## How to use DS-K1T804A Fingerprint Terminal connect to card reader by Wiegand

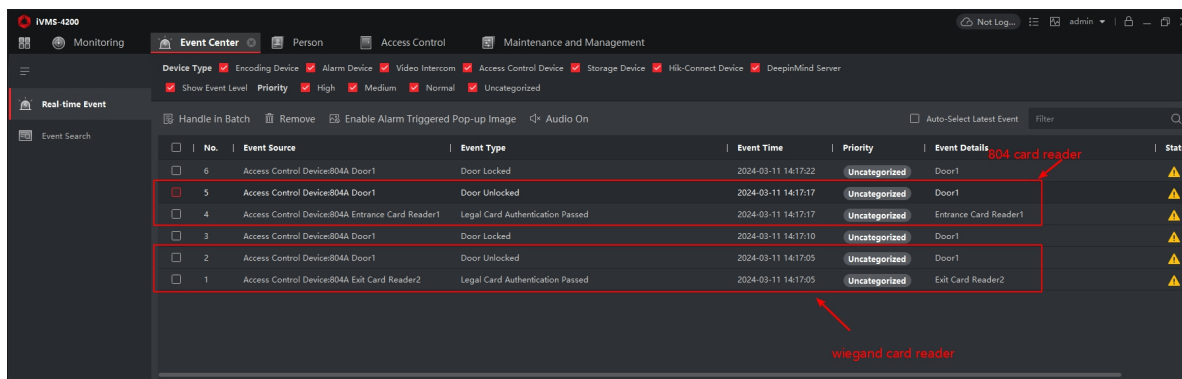
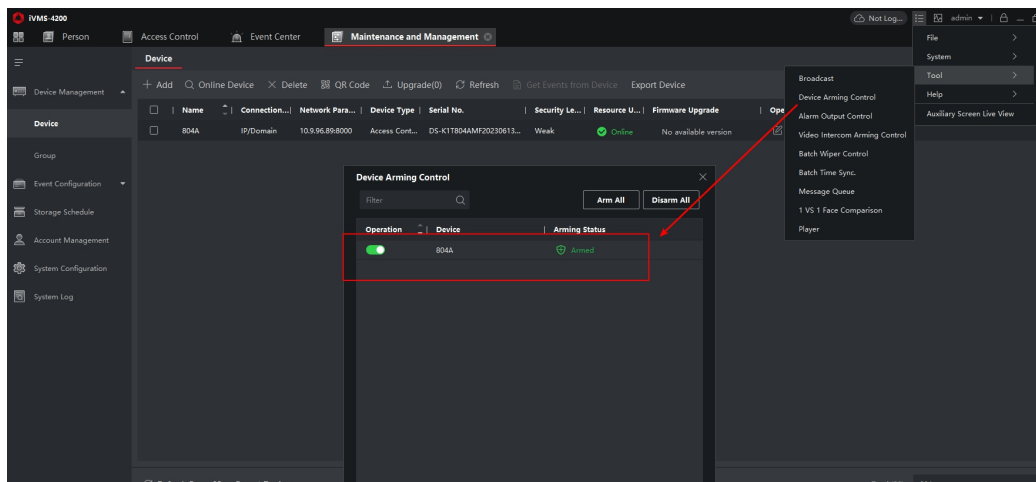


- 6) Check the data applying status, make sure the data have apply successfully.



- 7) Test it , view the real event form event center, make sure the device have been arming for this 4200. if not arming , notify the arming IP to disarm it or delete it. And then you can add it again.

## How to use DS-K1T804A Fingerprint Terminal connect to card reader by Wiegand





See Far, Go Further