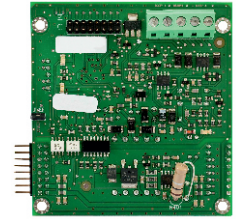


IRIS SS loop

Loop Expander, System Sensor Communication Protocol

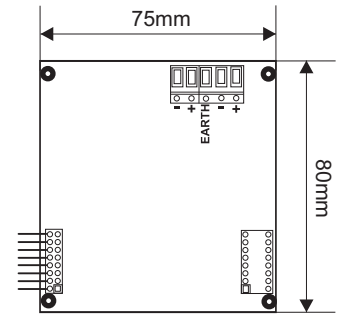
Description

IRIS SS Loop is a loop expander for 1 loop in IRIS Addressable Fire Alarm Systems. The loop expander supports System Sensor communication protocol and is designed to operate with System Sensor series detectors, modules and sirens.



Technical and Environmental Specifications

Communication Protocol	System Sensor
Maximum Current Consumption	500mA
Maximum number of devices	up to 198 <i>(99 detectors + 99 devices, where devices are modules, sirens and call points)</i>
Wire Gauge for terminals	0.4mm ² - 2.0mm ²
Operating temperature	-10°C to +65°C
Relative humidity resistance	(93 ± 3)% @ 40°C
Weight (including base)	~30g
Dimensions	75x80mm



Packing Information

- **Single packing box** - 1 unit IRIS SS loop, dimensions 108 x 108 x 46 mm

Compatible Product Range

- **IRIS** - Addressable Fire Panel
- **System Sensor detectors** - 22051E(I), 52051 Series, 22051TE(I), 22051TLE(I), 6500 Series, 22051EISE, etc.
- **KAC call points** - Wide range of manual call points
- **System Sensor modules** - M200XE, M201E, M201E-240, M210E, M220E, M221E, M210E-CZ, etc.
- **System Sensor sirens** - IBSOU, IBSST, WMSOU, WMSST, WMSTR, etc.

Contact Information: