



# INT-RS422-P2P-D/S

## RS422 Interfaces for CHAMELEON network



MADE IN PORTUGAL - EU

### GLOBAL FIRE EQUIPMENT S.A.

Sítio dos Barrabés, Armazém Nave Y, Caixa Postal 908-Z, 8150-016 São Brás de Alportel - PORTUGAL | Tel: +351 289 896 560  
Email: info@globalfire-equipment.com | Technical Support: techs@globalfire-equipment.com | [www.globalfire-equipment.com](http://www.globalfire-equipment.com)

# INSTALLATION MANUAL

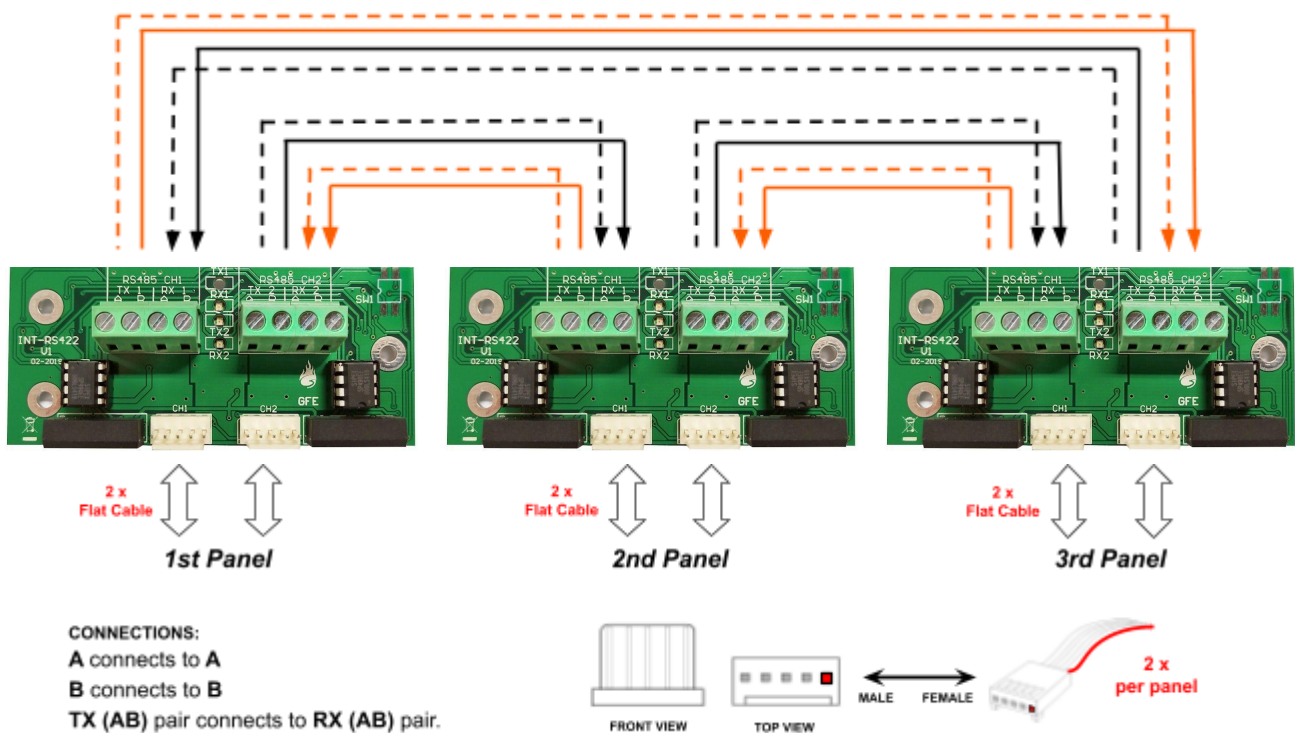
## INTRODUCTION

The **INT-RS422-P2P-D** interface allows double peer-to-peer RS422 connection, making it possible to build a closed loop, “daisy-chained” communication network between GFE's **CHAMELEON Panels** (G-One, GEKKO, OCTO+, NODE+ and CHAMELEON REPEATER).

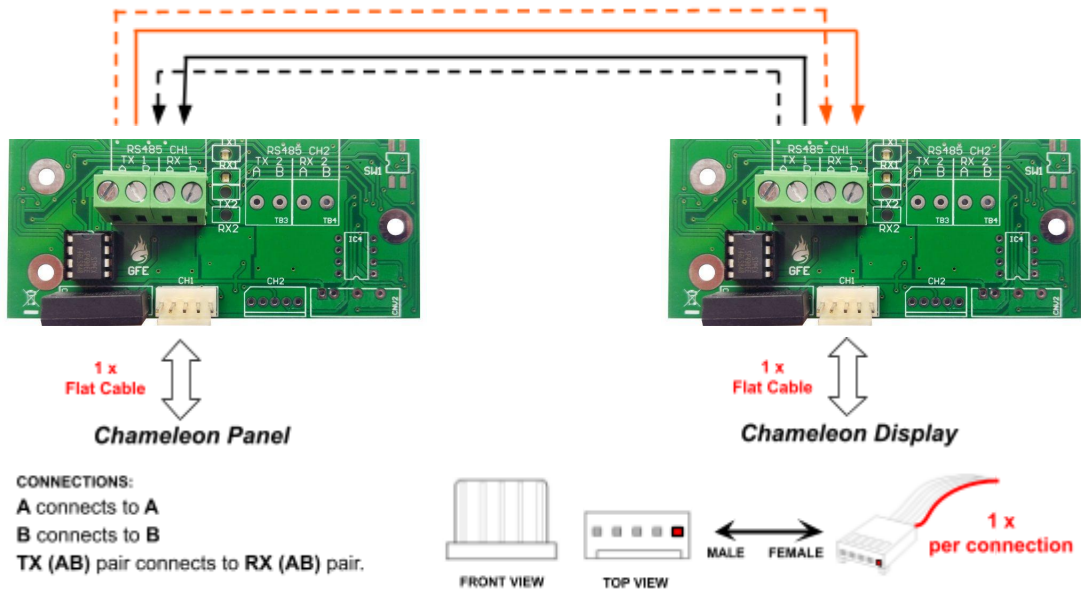
The **INT-RS422-P2P-S** interface allows one single RS422 connection. Mainly used for integration to 3rd party BMS systems or for a single extension connection to a CHAMELEON Display.

For more detailed information, such as commissioning, network topology options and installation troubleshooting, please refer to the **CHAMELEON Network Manual** or contact our Technical support team.

The following image shows a standard wiring connection between 3 panels in a “closed loop” fully redundant connection.




The following image shows a single wiring connection, normally used for CHAMELEON Display extension or BMS connection.



**WARNING**

Disconnect all power sources including primary (electrical mains) and secondary (batteries) supplies, before connecting or disconnecting interface modules.

**WARNING**

 Electro-static sensitive devices (ESD)  
 Take suitable ESD precautions when removing or installing printed circuit boards.

## TECHNICAL SPECIFICATIONS

POWER SUPPLY RATING	24V DC (17V to 30V DC)
SUPPLY CURRENT	14 mA
RECOMMENDED CABLE	Category 5 cable as defined by the EIA/TIA/ANSI 568 specification (<17 pF/ft @ 100 ohm)
MAXIMUM CABLE DISTANCE	1200m per connection
OPERATING / STORAGE TEMPERATURE	-10°C to 50°C
HUMIDITY	Max 85% RH Non-Condensing
PROTECTION	IP30
DIMENSIONS	90 (L) x 40 (H) x 20 (W) mm
WEIGHT	33 g
COMPATIBILITY	All CHAMELEON Panels (G-One, GEKKO, OCTO+, NODE+, CHAMELEON REP)



**GLOBAL FIRE EQUIPMENT S.A.**

Sítio dos Barrabés, Armazém Nave Y, Caixa Postal 908-Z, 8150-016 São Brás de Alportel - PORTUGAL | Tel: +351 289 896 560  
 Email: info@globalfire-equipment.com | Technical Support: techs@globalfire-equipment.com | www.globalfire-equipment.com