

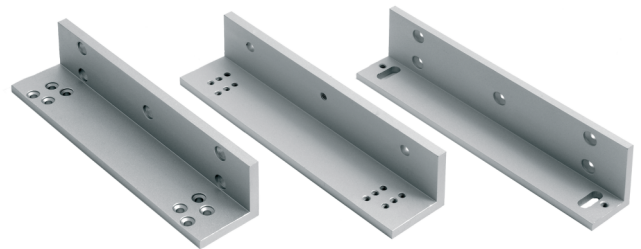
# FE110ZL

## L and Z Kit for Inward opening Doors for Eco Line Magnets (FE110 series)

### Description

---

For inward opening doors. Mounting brackets for the FE110xx series magnets.



# FE110ZL

## L and Z Kit for Inward opening Doors for Eco Line Magnets (FE110 series)

### Technical specifications

---

#### General

---

Product type	Mounting bracket
--------------	------------------

---

#### Holding force

---

Holding force kgf (Kilogram force)	150 kgf
---------------------------------------	---------

---

Holding force N (Newton)	1500
--------------------------	------

---

#### Physical

---

Physical dimensions	165 x 38 x 38 mm (Z bracket)(LxHxD) +/- 5% / 165 x 42 x 30 (L bracket)(LxHxD) +/- 5%
---------------------	---

---

Colour	Aluminium
--------	-----------

---

Finish	Vapour blasted aluminium
--------	--------------------------

---

