



Product Data Sheet

FE110US

Eco Line Maglock 150 Kgf, unmonitored, surface mount

Product Overview

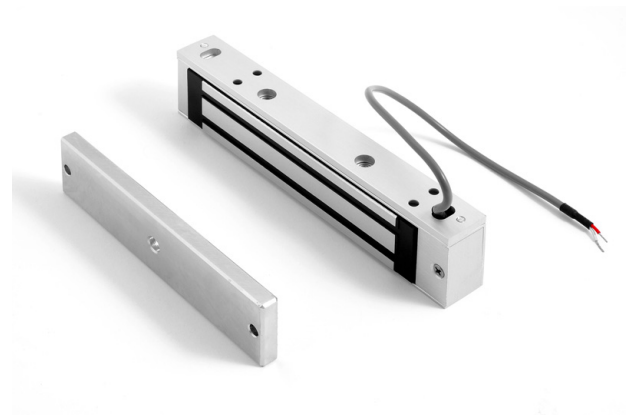
Eco Line mini magnetic lock. Surface mounting includes a quick mount bracket

Application

Internal non high security doors and security cabinets

Reliable security

This state of the art electro-magnetic locking device provides positive, instantaneous door control. Filler plates, angle brackets, and other mounting adapters are available to satisfy a wide range of door and frame types and conditions.



Standard Features

- 150 Kgf holding force
- Not monitored
- No residual magnetism
- 12/24 V dc jumper selectable operation
- Mounts easily with a minimum of tools

FE110US

Eco Line Maglock 150 Kgf, unmonitored, surface mount

Specifications

| | |
|------------------------|----------------------------|
| Mounting | Surface |
| Holding force | 150 Kgf |
| Input voltage | 12/24 VDC |
| Current draw | 460 mA (+/- 2,5% @ 13,5 V) |
| Dimensions (W x H x D) | 166 x 38 x 22 mm |
| Bi colour LED | No |
| Door status switch | No |
| Monitored changeover | No |
| Magnetic bond sensor | No |

Ordering Information

| Part No. | Description |
|----------|--|
| FE110US | Eco Line Maglock 150 Kgf, unmonitored, surface mount |
| FE110ZL | L and Z Kit for Inward opening Doors for Eco Line Magnets (FE110 series) |

