

# FAW355

## Conventional VAD, Deep Base, Wall Mount - Red Flash

### General

---

The FAW355 is a general purpose wall mount LED beacon for fire alarm applications. It features a special base deep containing all wiring connections and allow for easy removal/placement of the device. With an EN54-23 approved coverage pattern of W-2.4-7.5, each FAW355 may be mounted up to 2.4m high and cover a square room of 7.5 x 7.5m with a single device.

### Easy and Fast Installation

---

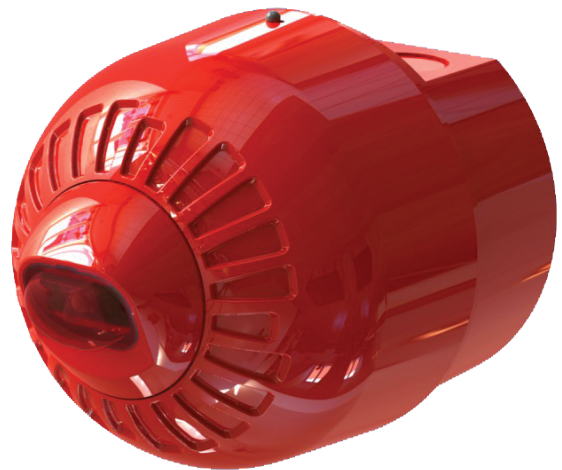
The FAW355 beacons allow faster installation and maintenance thanks to an innovative mounting base. Dispensing with the need for locking screws, these beacons use TimeSaver™ bases from the 630 series detectors. Heads are simply locked onto the base with a “twist and click” action, allowing fitting or removal at any time because the base is the only component that needs to be wired. As the cabling requirement is reduced, commissioning time and costs are naturally reduced as well.

### Efficient and versatile

---

The FAW355 beacons utilise a specially designed lens giving a uniformed light output over the specified coverage area. The flash rate of the beacon may be adjusted during installation, with a selection of 0.5Hz or 1Hz.

The mechanism for locking the device to the base may be activated if required. Once activated, a special tool is required to remove the beacon from the base.



### Details

---

- Automatic synchronisation
- Anti-Tamper locking mechanism
- Deep mounting base
- Wiring directly to base
- Flash rate selectable
- IP65 Ingress protection

# FAW355

## Conventional VAD, Deep Base, Wall Mount - Red Flash

### Technical specifications

#### Electrical

Operating voltage	17 to 60 VDC
-------------------	--------------

#### Physical

Physical dimensions	100 x 104 mm (Ø x D)
Net weight	250 g
Colour	Red
Mounting position	Wall
Mounting height	up to 2.4 m
Material	High impact polycarbonate

#### Environmental

Operating temperature	-25 to +70°C
Relative humidity	5 to 95% noncondensing
Environment	Indoor, Outdoor
IP rating	IP65

#### Regulatory

Certification	EN54-23
---------------	---------

#### Operation

Continuous
------------

#### Current consumption

20mA @ 0.5 Hz / 40mA @ 1 Hz
-----------------------------

#### Flash rate

0.5Hz or 1Hz
--------------

#### Automatic synchronisation

Phased start
--------------

#### Line monitoring input

Polarised input
-----------------

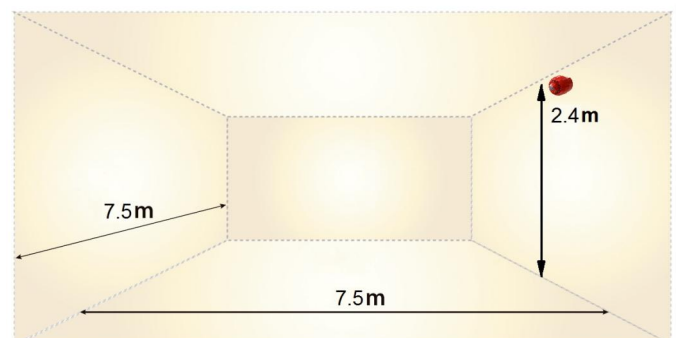
#### Flash colour

Red
-----

#### EN54-23 rating

Light coverage	W-2.4-7.5
Floor coverage	up to 7.5 x 7.5 m

#### EN54-23 Coverage: W-2.4-7.5



As a company of innovation, Carrier Fire & Security reserves the right to change product specifications without notice. For the latest product specifications, visit [firesecurityproducts.com](http://firesecurityproducts.com) online or contact your sales representative.

Last updated on 3 August 2022 - 16:24