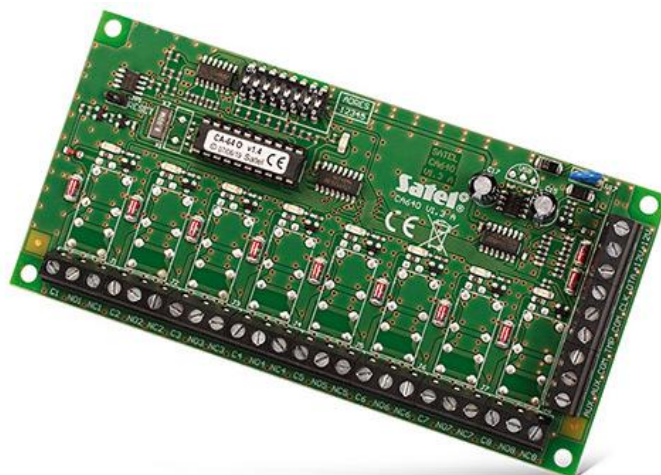


CA-64 O-OC

OUTPUT EXPANSION MODULE

An extension module for **VERSA** and **INTEGRA** control panel outputs making it possible to extend a system with 8 additional outputs. Depending on the module variant, this may include "open collector" type outputs, relay outputs or a combination of both these types.

- system expansion with 8 outputs
 - 8 low current OC outputs



TECHNICAL DATA

Environmental class	II
Max. relay switched voltage	24 V
Max. relay switched current	2 A
Supply voltage	12 V DC
OC outputs rating	50 mA
Board dimensions	140 x 68 mm
Operating temperature range	-10...+55 °C
Weight	74 g
Current consumption (w/o OC type output load and w/o active relays)	36 mA
Current consumption by active relay	20 mA



The actual appearance of the products may differ from the presented images. Product descriptions are provided in the web service for information purposes only.