

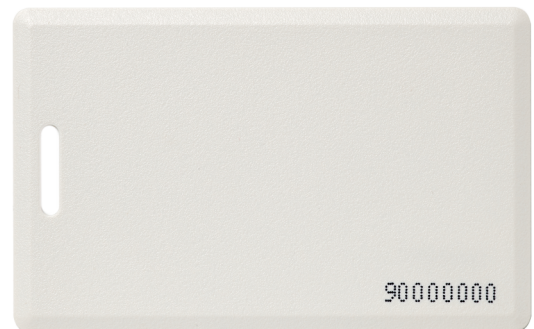
ATS1452

(5 PACK) Secure ATS Clamshell card

Product overview

The Clamshell shape card in beige color offers a robust solution for a secure environment where card data is protected with Mifare Desfire EV2 encryption. It can be used in secure mode with ATS118x range readers and ATS1136 keypad.

When used on other Mifare Readers the standard Mifare 7-byte CSN is provided instead of the secure card data.



Details

- Attractive designed keyfob in Clamshell model
- Card data secured by AES encryption
- Mifare Desfire EV2 encrypted application

ATS1452

(5 PACK) Secure ATS Clamshell card

Technical specifications

System

Reading distance	Secure mode: between 1 - 5 cm Unsecure mode: between 2-5 cm Distance may vary based on reader
Custom data model	No
Memory size	2 kB
Supported readers	ATS ATS118x Secure Readers

Technology

Credential type	Smart card
Credential driftsfrekvens	13.56 MHz
Supported technology	MIFARE DESFire EV2 (Aritect), Mifare DESFire EV2 (CSN)

Printing

Direct surface printing	No
-------------------------	----

Ordering information

Minimum order quantity	1
Cards / tags in package	5

Physical

Material	ABS plastic
Form factor	Clamshell
Physical dimensions	86 x 54 x 2 mm (per keyfob)
Net weight	45 g
Shipping weight	46 g
Colour	Beige
Card Label	Serial number

Environmental

Operating temperature	-25 to +50°C
IP rating	IP66



As a company of innovation, Carrier Fire & Security reserves the right to change product specifications without notice. For the latest product specifications, visit firesecurityproducts.com online or contact your sales representative.

Last updated on 5 May 2023 - 10:30